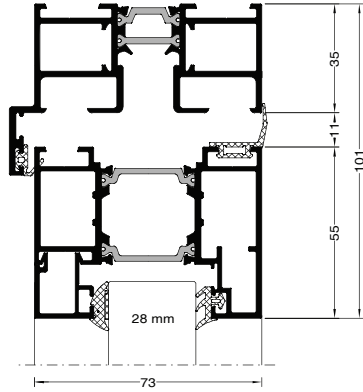


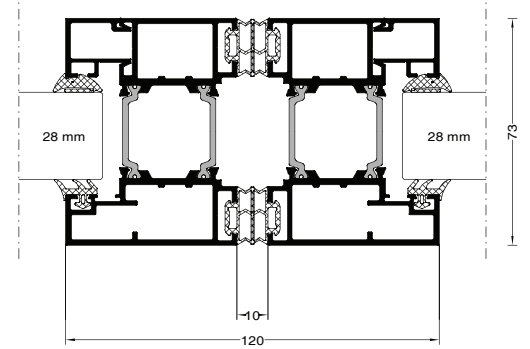


# BI-FOLD SYSTEM

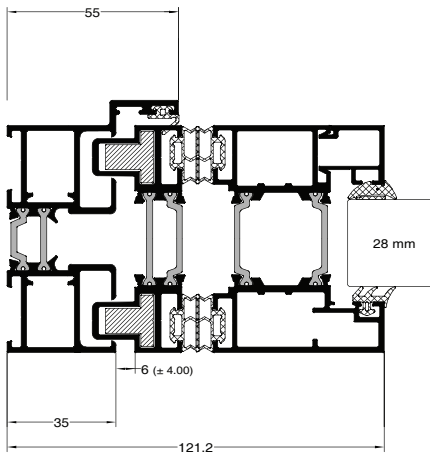
## Section Details



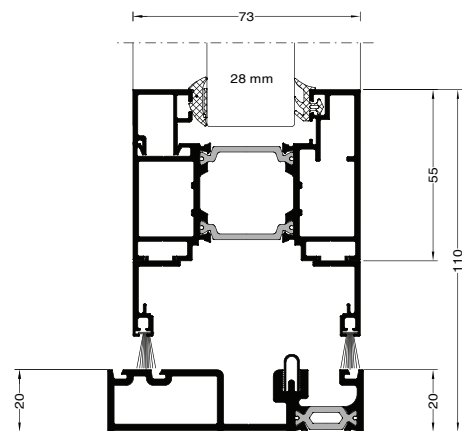
Head Detail



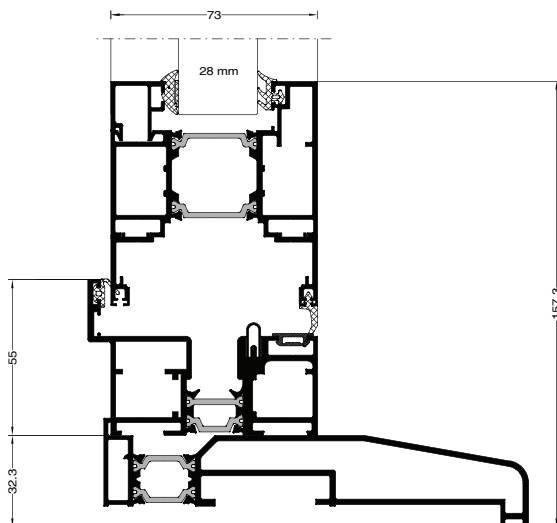
Sash to Sash Detail



Outerframe with Adjustable Jamb



Low Threshold Detail



Standard Threshold on Cill

**NOVA GROUP**  
Double Glazing Systems

The complete service to the double glazing industry since 1971

0161 613 9600

Nova Group Limited  
Norman Road | Altrincham | Cheshire | WA14 4EN  
[www.novagroup.co.uk/aluminium](http://www.novagroup.co.uk/aluminium)